

# CloudWorx Suite 2023.1.0 Release Notes

Leica Geosystems



## Release Notes

Product	CloudWorx Suite 2023.1.0 Release Notes
Date	December 13, 2023
Developed by	Reality Capture Software Product Management

## What's New

### New Data Architecture

With the version 2023.1 release of the below-listed Leica Geosystems reality capture software, Leica Geosystems has begun an investment into a new, next-generation reality capture data architecture that is expected to mature into a new gold standard for reality capture projects.

The Leica Geosystems reality capture data architecture powers applications like Cyclone REGISTER 360 PLUS and Cyclone ENTERPRISE as well as the new LGSx file – the evolution of the popular LGS file. The update provides a next-generation solution that includes significantly faster writing (publishing), higher compression, a new visualization experience, and a new core data architecture. The data architecture change is instrumental in allowing Leica Geosystems to build out exciting new capabilities and features in the future to meet the growing needs of the reality capture industry.

Examples of new features that are now possible to build into future software updates, and are planned as such, include, but are not limited to, enabling time-saving “Save” actions when editing an LGSx file with no need for full file copy via “Save As”, file versioning and histories (e.g., track edits to GeoTags, markups, etc. with options to “restore” from the version history), enhanced model and mesh support, and much more. Moving forward, the LGSx format will be opened by any of Leica Geosystems’ reality capture office and cloud apps, bringing consistency for seamless operations and workflows across multiple industries.

With this release, LGS files will no longer be published by any of the below listed products though they will still be consumed. It is recommended that all products be updated in synch to ensure a seamless workflow transition.

Applications included in this update:

- Cyclone REGISTER 360 PLUS 2023.1
- CloudWorx 2023.1 suite
- TruView 2023.1
- Cyclone ENTERPRISE 2023.1
- TruView Enterprise & TruView Cloud 2023.1
- Reality Cloud Studio, powered by HxDR
- NEW: LGS File Converter 2023.1 (free LGS-to-LGSx conversion utility with batch conversion ability)

Applications which will soon support the LGSx file:

- Cyclone 3DR
- Cyclone Pegasus OFFICE
- Map360
- Infinity

The following table provides details about product-feature capabilities:


Product	Open/ Import LGS	Open/ Import LGSx	Publish LGSx	In-App Project Conversion	Batch Conversion Support	Publish LGS
LGS File Converter 2023.1	Yes	n/a	Yes**	n/a	Yes	No
Cyclone REGISTER 360 PLUS 2023.1 family	Yes	Yes	Yes	Yes	Yes	No
Cyclone ENTERPRISE 2023.1	Yes	Yes	Yes	(future)	(future)	No
TruView 2023.1	Yes*	Yes	Yes	n/a	n/a	No
CloudWorx 2023.1 suite	Yes*	Yes	Q2 2024***	Yes	n/a	No
TruView Enterprise & Cloud 2023.1	Yes	Yes	Yes**	n/a	n/a	No
Reality Cloud Studio, powered by HxDR	Yes	Yes	(future)	n/a	n/a	No
Cyclone 3DR	Yes*	Q1 2024	Q1 2024	n/a	n/a	No
Cyclone FIELD 360 family	No	(future)	(future)	n/a	n/a	n/a
Cyclone Pegasus FIELD	n/a	n/a	Q2 2024	n/a	n/a	n/a
Cyclone Pegasus OFFICE	n/a	n/a	Q2 2024	n/a	n/a	n/a
Map360	Yes*	Q1 2024	(future)** *	n/a	n/a	No
Infinity	n/a	n/a	(future)	n/a	n/a	No
Cyclone CORE 2023.1.0	Yes	n/a	No	No	No	Yes

Support for opening legacy LGS files will be limited through the end of the calendar year 2024

\*\* With batch publish queue for customers migrating from these legacy products

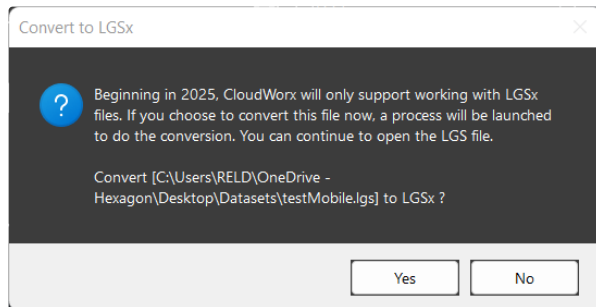
\*\*\* Open e57 and convert to LGSx for native use.

Users are welcome to use the Leica LGS Converter Tool (part of 2023.1.0 release) for converting LGS file(s) to LGSx file(s) and save them directly to the user-selected directory location.

 Note: No license is needed to run the LGS Converter Tool

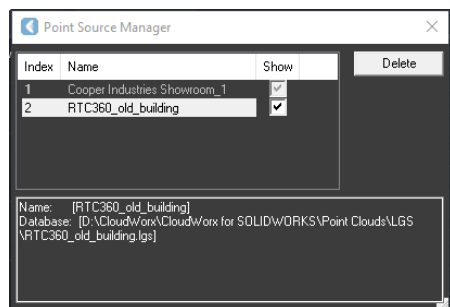
## New Features (Common to all CloudWorx Plugins)

- In-App LGSx converter (parallel conversion to the same location of the original dataset)



In-App prompt to initiate LGSx conversion

- A dialog for supporting multiple point cloud sources is now available for all Plugins.



Point Source Manager

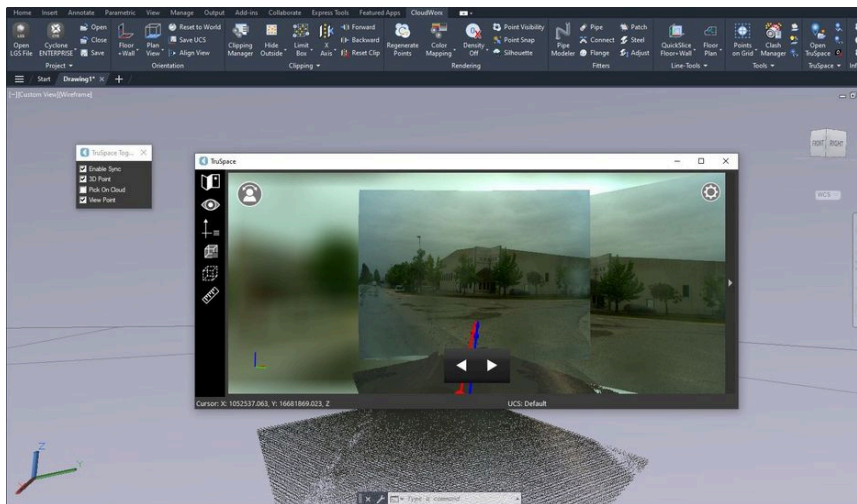
- Support for handling cube images for WayPoints (Mobile Setups aka Tracks)



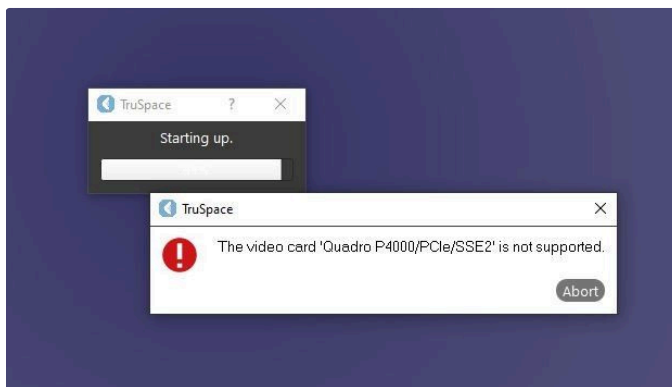
- Add support for Clip-by-Time in TruSpace (Mobile tracks)



Create a clip by time (seconds)



- Detect automatically graphic card on the host machine



A warning message that the video card is not supported

## Deprecated Features

Leica Geosystems strives to provide support for the widest array of operating systems and file formats possible as is reasonable given current technologies and support from third-party partners.

With each release, we review our list of currently supported formats and operating systems in line with industry trends and announce product terminations.

Leica Geosystems may add or terminate support for a file format during any release. Obsolete operating systems will be supported for six months after their announced termination or the next major software release, whichever comes first. Server products will be supported in alignment with Leica's Client License Manager (CLM) supported servers to guard users against incompatibility.

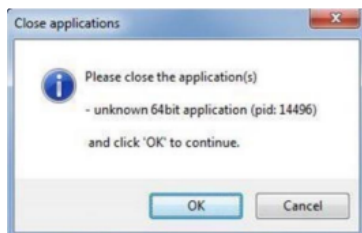
CloudWorx 2023.1 Suite:

- All LGS files imported into the product will be converted to LGSx format by user's selection (optional). After conversion that will perform in the background, the new LGSx file will be stored at the same location of the original LGS file.

---

## CLM Licensing Information

Installing CLM while the JetStream service is running - During installation of CLM, users may encounter the following error message:



This is commonly due to a service like JetStream running in the background.

To enable the successful installation of CLM, please follow these steps:

- Launch the task manager
- Select the Services tab
- Look up the process with the PID (Process ID) shown in the Close applications dialog
- In this case it is JetStream
- Terminate the process so that CLM can be installed
- After CLM is installed, click on the Services button in the Task Manager and restart the service

**Note:** A general CLM license compatibility support fix is included.

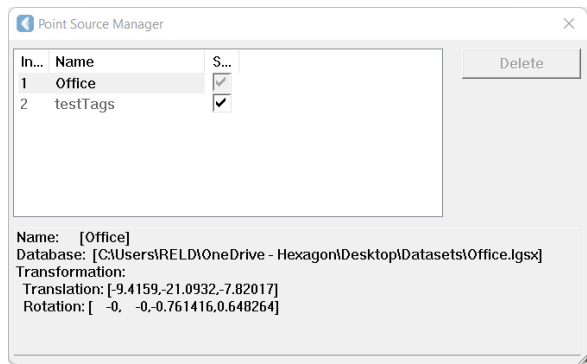
**Note:** All users with a currently valid CCP (Customer Care Package), or with CCP valid as late as 1 November 2023, can run this new version with no new license required.

# CloudWorx for Revit 2023.1.0 Release Notes



## New Features and Improvements

- Support for Autodesk Revit 2024 release.
- A dialog is added for supporting multiple point cloud sources



Point Source Manager (Project Group Ribbon)

---

## Fixed Issues

- None

---

## Known Issues

- Align to Model feature is not documented in the in-app help. A detailed documentation will be available soon on Reality Capture Software Documentation site (public)

---

-