

# Leica Geosystems Release Notes

**Product** Leica CloudWorx 2023.0.0 for SOLIDWORKS  
**Date** 7 March 2023  
**From** Reality Capture Software Product Management

## Contents

<b>What's New</b> .....	<b>2</b>
Support for SOLIDWORKS 2023 .....	2
Load Models from Project.....	2
Pipe Modeler .....	2
Improved Cloud to Model Alignment .....	3
Support for CloudWorx Ultimate.....	3
<b>Bug Fixes</b> .....	<b>3</b>
<b>Leica CloudWorx 2023.0.0 Compatibility and Upgrades</b> .....	<b>3</b>
<b>Known Issues</b> .....	<b>4</b>
<b>Licensing</b> .....	<b>5</b>

## What's New

This is a major release including support for loading models from projects, a new pipe modeler tool, TruSpace improvements, the addition of CloudWorx to the Leica Software Improvement Program, support for SOLIDWORKS 2023, and the addition of CloudWorx for SOLIDWORKS to the CloudWorx Ultimate license.

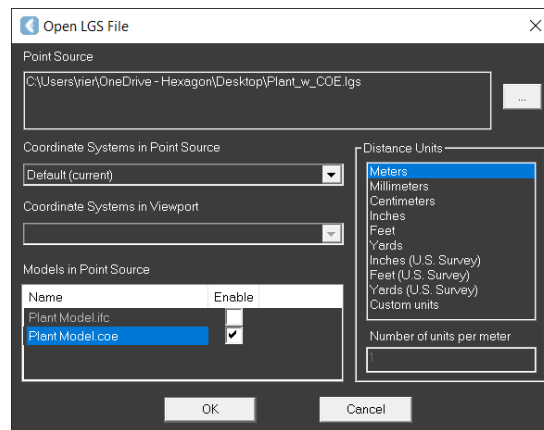
### Support for SOLIDWORKS 2023

CloudWorx 2023.0.0 for SOLIDWORKS now officially supports SOLIDWORKS 2023.

### Load Models from Project

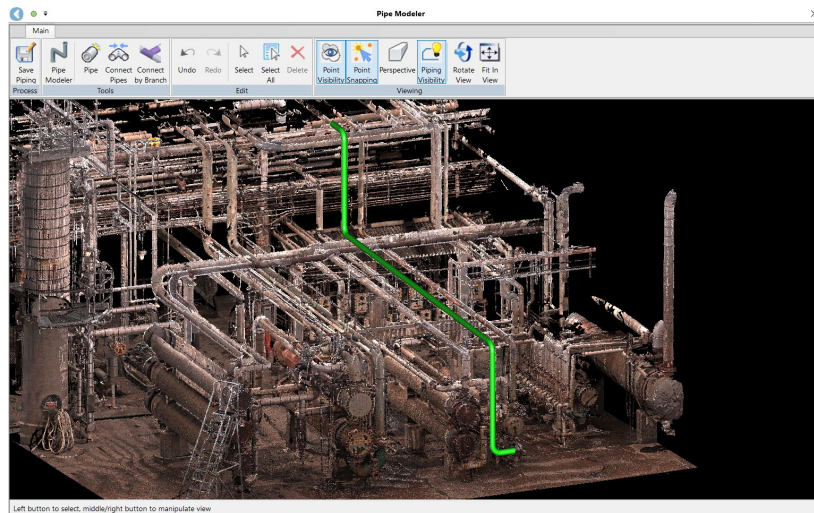
Users can now load models that have been added to a Cyclone ENTERPRISE project or LGS file via TruView directly from the Open dialog. CloudWorx will now present a list of models attached to the data source.

**Note:** At this time, only COE and OBJ formats are supported.



### Pipe Modeler

CloudWorx 2023 adds a new Pipe Modeler tool to improve the process of modeling pipe runs. The Pipe Modeler tool allows users to automatically grow and extend pipes with a series of clicks and can automatically create elbows and branches. This tool extends the capabilities of the existing Pipe Fitter to make it even more convenient for modeling much larger sections of pipe.



### ***Improved Cloud to Model Alignment***

The Align to Model tool will now run a post-alignment optimization to improve the fit of the elements. This will result in more accurate placement after using this tool.

### ***Support for CloudWorx Ultimate***

With the release of CloudWorx 2023.0.0 for SOLIDWORKS, users with a CloudWorx Ultimate license will now have access to the product.

### **Bug Fixes**

- Resolved an issue which could result in rendering artifacts when using data with large coordinate offsets.

## **Leica CloudWorx 2023.0.0 Compatibility and Upgrades**

### ***Upgrading to Leica CloudWorx 2023.0.0 for SOLIDWORKS from Leica CloudWorx 2022.x for SOLIDWORKS***

You must have Administrator-level privileges on your workstation to correctly install Leica CloudWorx software.

If using IMP data, first run the current Cyclone installer if you do not have a version of Cyclone installed. Otherwise/Next run the CloudWorx 2023.0.0 installer and follow the directions to proceed with the installation. Please heed the warning message about compatibility of earlier version databases. We strongly recommend that users not use the “Repair” option when upgrading. Rather, users should select “Remove” when it appears and then run the installer again to install the new version.

### ***Compatibility with Leica CloudWorx 2023.0.0 for SOLIDWORKS and SOLIDWORKS Versions***

CloudWorx 2023.0.0 for SOLIDWORKS officially supports SOLIDWORKS 2018 through 2023.

### **Compatibility with JetStream Enterprise**

CloudWorx 2023.0.0 for SOLIDWORKS is compatible with JetStream Enterprise 1.3 and higher. To access the latest features, it is recommended that users update to the latest release of JetStream Enterprise 2022.

### **Compatibility with Cyclone ENTERPRISE**

CloudWorx 2023.0.0 for SOLIDWORKS is compatible with Cyclone ENTERPRISE 2021.0.0 and higher.

### **CloudWorx Ultimate**

As of version 2023.0.0, CloudWorx for SOLIDWORKS is included in the CloudWorx Ultimate License.

### **Deprecated Features**

Leica Geosystems strives to provide support for the widest array of operating systems and file formats possible as is reasonable given current technologies and support from third-party partners. With each release, we review our list of currently supported formats and operating systems in line with industry trends and announced product terminations.

Leica Geosystems may add or terminate support for a file format during any release. Obsolete operating systems will be supported for six months after their announced termination or the next major software release, whichever comes first. Server products will be supported in alignment with Leica's Client License Manager (CLM) supported servers to guard users against incompatibility.

Please reference the Leica Geosystems Deprecated Features policy for a complete listing of discontinued features, formats and operating systems.

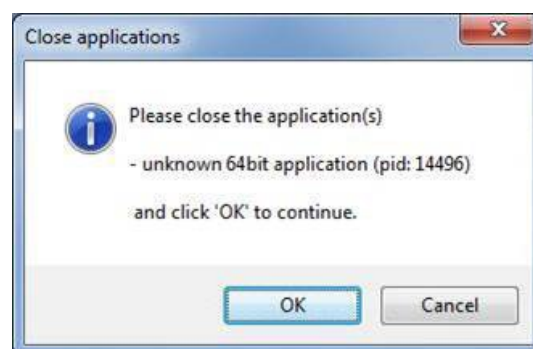
CloudWorx 2022.0.1

- CLM versions prior to 2.5 are no longer supported.

## **Known Issues**

### **Installing CLM while the JetStream is running**

During installation of CLM, users may encounter the following error message. This is commonly due to a service like JetStream running in the background.



To enable the successful installation of CLM, please follow these steps:

- Launch the task manager
- Select the Services tab
- Look up the process with the PID (Process ID) shown in the Close applications dialog

- In this case it is JetStream
- Terminate the process so that CLM can be installed
- After CLM is installed, click on the Services button in the Task Manager and restart the service

### ***Equivalent user permissions requirement***

When working with IMP data, SOLIDWORKS must be run with the same level of user privileges as Cyclone was originally configured with. Meaning if Cyclone is configured to Run As Administrator, then SOLIDWORKS should be Run As Administrator to connect to Cyclone and open an IMP.

### ***Exporting to 3D PDF***

When exporting data to a 3D PDF, it is possible that users might encounter an error. If this happens, please restart SOLIDWORKS and re-open the document without the point cloud. The document should now export normally.

### ***LGS usage over network***

The use of LGS files is only officially supported when the files are saved locally. Due to variations between network deployments LGS files may be unreliable when hosted in a network location.

## **Licensing**

All users with a currently valid CCP (Customer Care Package), or with CCP valid as late as 1 January 2023, can run this new version with no new license required.